

# T219 SERIES D-SUB 15 PIN+DVI 24 PIN

**NOTES :**

**MATERIAL :**

INSULATOR : PBT OR NY66, UL94V-0 RATED.  
 COLOR : WHITE AND BLUE.  
 CONTACTS : COPPER ALLOY.  
 PLATING : GOLD ON CONTACT AREA AND TIN ON  
 SOLDER TAIL, ALL WITH NICKEL UNDERPLATING  
 SHELL AND HOLDER : COLD ROLLER STEEL. WITH NICKEL PLATED  
 SHELL(DVI) : ZING ALLOY OR STEEL. WITH NICKEL PLATED.  
 BOARDLOCK : BRASS OR STEEL. WITH TIN PLATED.  
 SCREW : BRASS OR STEEL. WITH NICKEL PLATED.

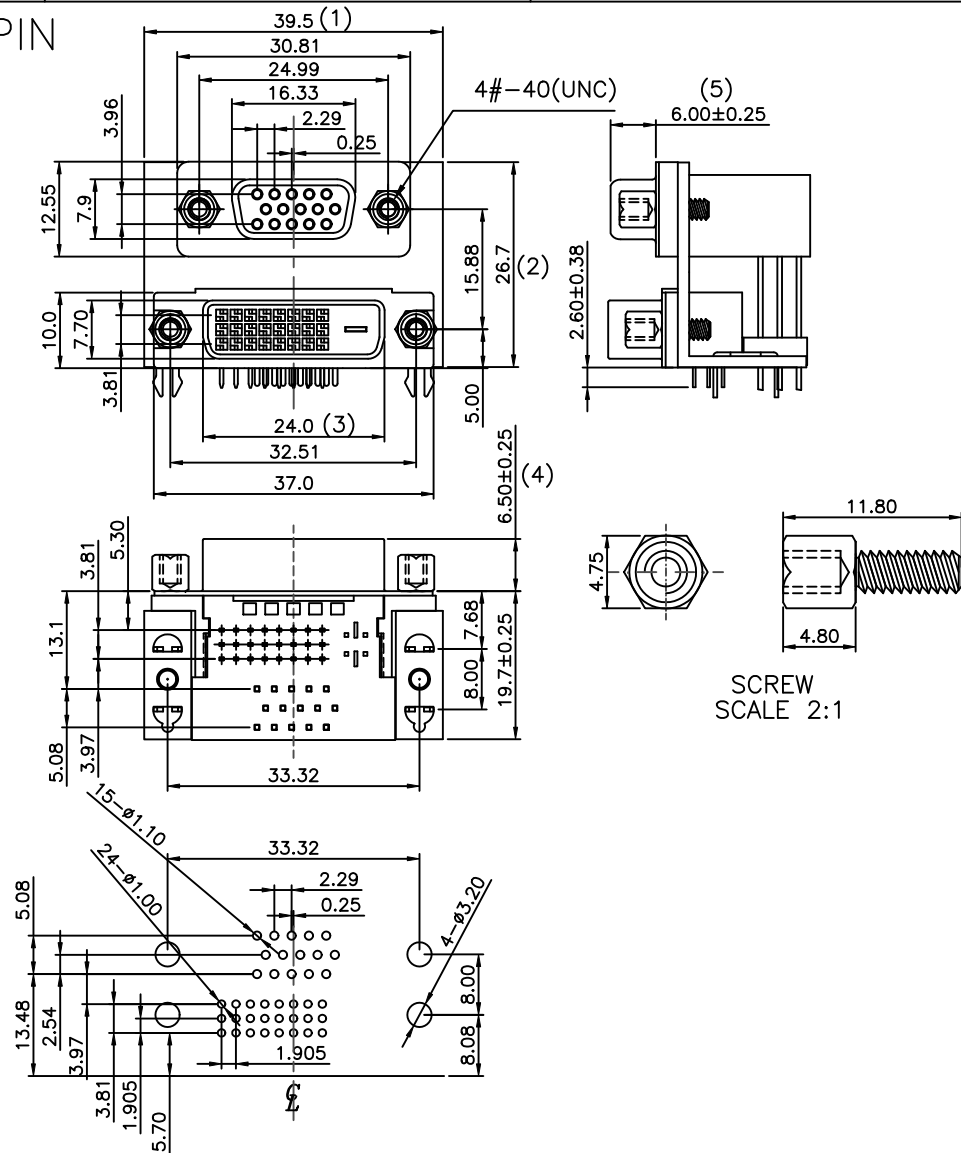
**SPECIFICATIONS :**

**ELECTRICAL CHARACTERISTICS :**

CONTACT CURRENT RATING : 3 AMPERES.  
 DIELECTRIC WITHSTANDING VOLTAGE : AC 1000/60SEC.R.MS.  
 INSULATION RESISTANCE : 1000 MEDOHMS MINIMUM.AT DC 500V.  
 CONTACT RESISTAANCE : 25 MILLIOHMS MAXIMUM.  
 OPERATING TEMPERATURE : -55°C TO+105°C

**MECHANICAL CHARACTERISTICS :**

CONTACT INSERTION FORCE :341g MAXIMUM.  
 CONTACT SEPERATION FORCE :21g MAXIMUM.



SCREW SCALE 2:1

RECOMMENDED P.C.B LAYOUT

勳皇科技股份有限公司 AMCO TEC INTERNATIONAL INC.					<b>DIMENSION CLASSIFICATION</b> ◎:CRITICAL ○:MAJOR ( ):REFERENCE		<b>PRODUCT CUSTOMER COPY</b> SCALE 1:1 SHEET		PART NO: 219-200000-001
					DWG PATH C:\ROBER\2\T219-0401	DATE		GENERAL TOLERANCE X. .X ±0.20 .XXX ±0.05 X.' .X'	DWG NAME: D-SUB 15 PIN+DVI 24 PIN
					APP. ROBER 04-24-08	DATE 04-24-08		UNIT:MM	
					CHK. ROBER 04-24-08	DATE 04-24-08			
REV.	ECN.NO.	NAME	DATE	DR. WENZI 04-24-08	DATE 04-24-08				