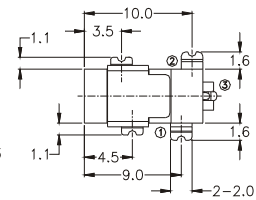
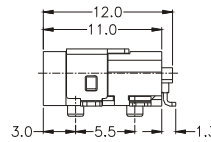
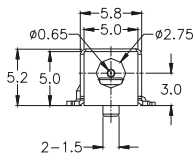
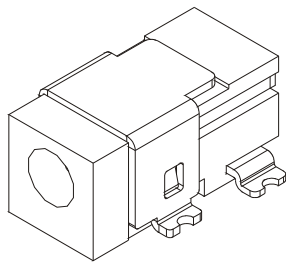


MODEL :721Series

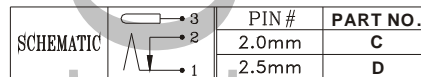
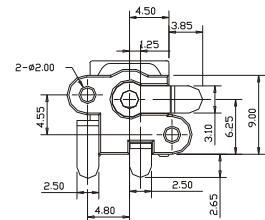
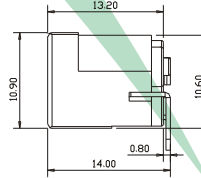
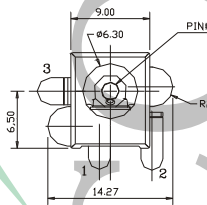
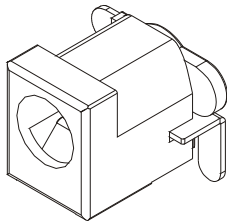


TOP VIEW

7 2 1
SMT Type
Shielded Super Miniature

Number of Contacts	Pin Type	Housing Color	Contact Plated
3 3:3Pin	C C:0.65mm	B B:Black	T 1 T1:TIN (100u" Sn Over 40u"Ni)

MODEL :722Series



PCB LAYOUT
 <BOTTOM VIEW>

7 2 2
SMT Type
Vertical Mount

Number of Contacts	Pin Type	Housing Color	Contact Plated
3 3:3Pin	C C:2.0mm D:2.5mm	B B:Black	T 1 T1:TIN (100u" Sn Over 40u"Ni)