

SCC SERIES SMARTMEDIA CARD CONNECTOR

NOTES:

1. Material:

Housing: Thermoplastic UL94V-0

Color: Black

Contact: Phosphor Bronze

Tin/Lead 100u" at Solder Tail, See "Ordering Information" for Contact Area Plating

Cover: Brass, Nickel plating for all.

2. Specification:

A. Electrical Characteristics:

A-1. Contact Resistance: 40 Milliohms Max.

A-2. Dielectric Withstanding Voltage:
500 VAC Max With 1 Minute

A-3. Insulation Resistance: 1000 Megaohms Min.

A-4. Current Rating: 1 A AC/DC MAX.
Rated Voltage: 500 V RMS Min.

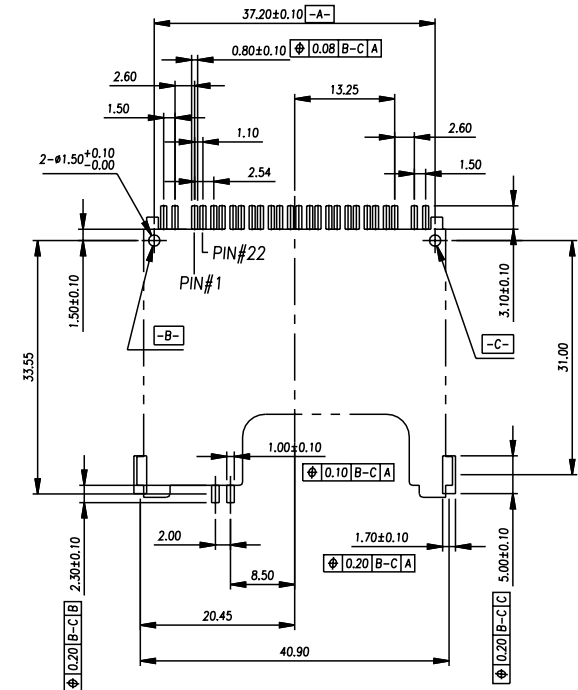
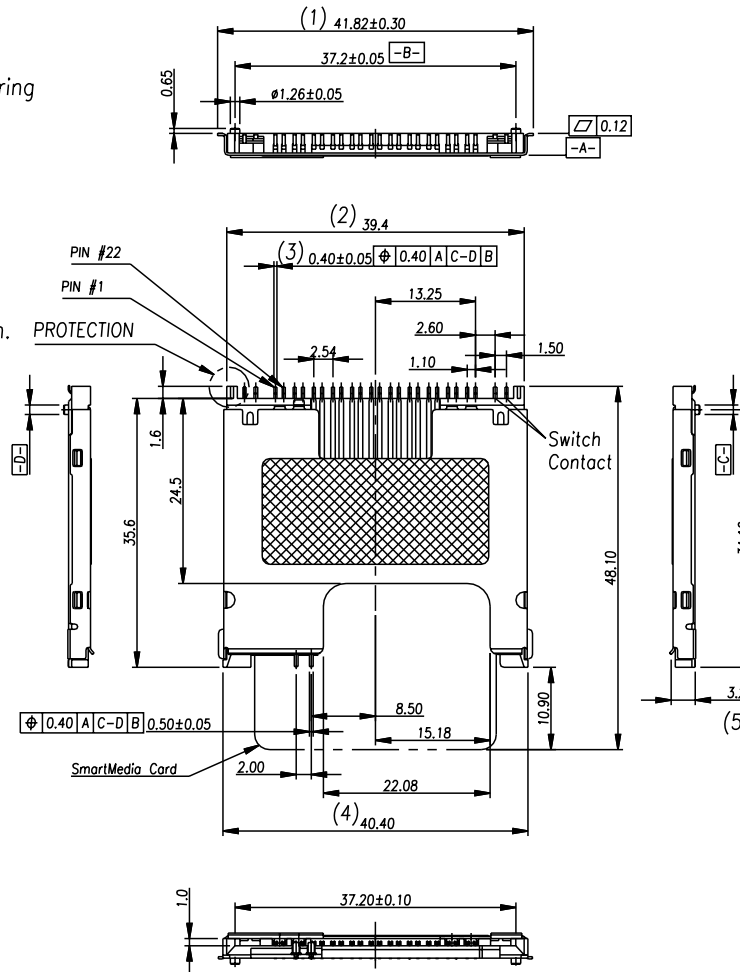
B. Mechanical Characteristics:

B-1. Insertion Force: 9.80 N Max.

B-2. Separation Force: 1.47 N Min.

B-3. Contact Retention Force: 0.98 N Min.
Per Contact

B-4. Operating Temperature: -20°C ~ +60°C



P.C.B Layout

勅皇企業股份有限公司 AMCO TEC INTERNATIONAL INC.	△				DIMENSION CLASSIFICATION CRITICAL MAJOR () REFERENCE		PRODUCT CUSTOMER COPY		PART NO: SCC-A09 DWG NAME: SMARTMEDIA CARD CONNECTOR
	△				DWG PATH	C:\ROBER\SCC\SCC-0118	SCALE	1:1 SHEET	
	△				DWG NO:	SCC-0118.010	DATE		
	△				APP.		UNIT:MM	GENERAL TOLERANCE .XX ±0.20 .XXX ±0.05 .X' .X'	
REV.	ECN.NO.	NAME	DATE	DR.					